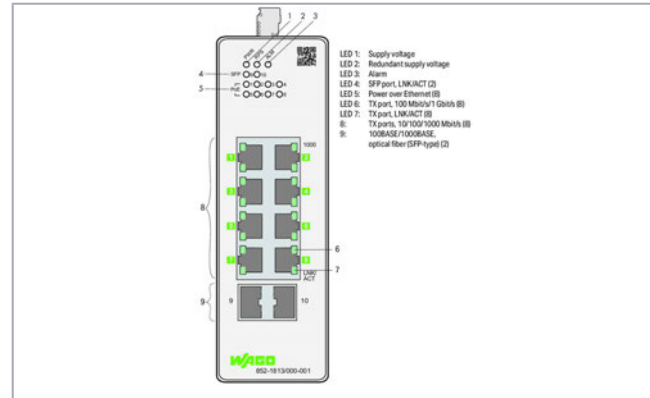
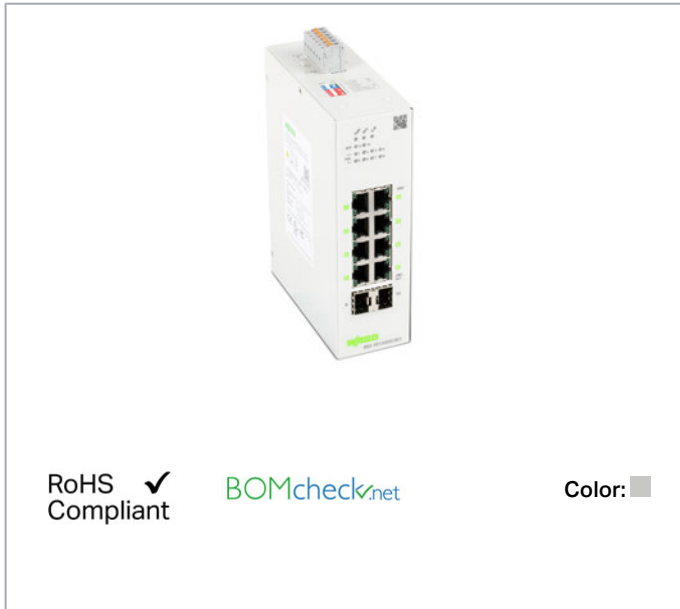


Data sheet | Item number: 852-1813/000-001 **NEW**



Lean Managed Switch; 8-Port 1000BASE-T; 2-Slot 1000BASE-SX/LX; 8 *
Power over Ethernet; light gray

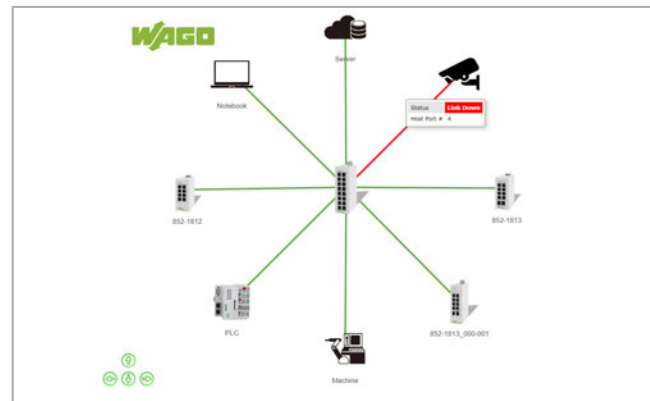
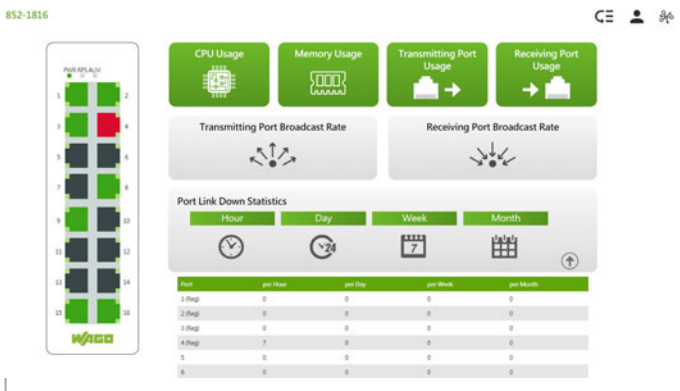
www.wago.com/852-1813/000-001



RoHS Compliant ✓

BOMcheck.net

Color: ■



Item description

The 852-1813/000-001 is a configurable industrial ETHERNET switch with eight 10/100/1000BASE-T ports, all of which support 30 W "Power over Ethernet" (PoE+), and two SFP 100BASE-FX/1000BASE-LX/SX/ZX ports (SFP modules are available as an option). All eight PoE+ ports can be operated simultaneously (PoE power budget: 24 VDC = 120 W or 48 VDC = 240 W).

Enclosed in a rugged housing, this switch offers both a redundant power supply and relay-based function monitoring. This device also streamlines network management: Commissioning and diagnostics are intuitive and can be performed without extensive IT knowledge. The topology map clearly displays the switch and connected devices. Key diagnostic information is displayed on the diagnostics dashboard.

The following functions increase the robustness, availability and security of the network.

Security:

Subject to changes. Please also observe the further product documentation!



Network segmentation per IEEE802.1Q (max. 5 VLANs), authentication of network devices per IEEE802.1X, firewall functions using the access-control list (max. 32 entries)/service control, port security

Availability:

Rapid Spanning Tree Protocol (RSTP) for meshed and ring networks, ETHERNET Ring Protection Switching (ERPS) for up to two rings per switch, loop detection and storm control on each port

Configuration/Diagnostics/Maintenance:

Port mirroring, Modbus® registers, SNMP v3, SNMP trap events, alarm threshold, port statistics, backup and restore, system log, syslog server, command line interface with SSH/Telnet, topology map and dashboard

Data**Technical Data**

Switching mode	Store-and-forward; non-blocking
Number of 1000Base-T ports	8
Number of 1000Base SX/LX ports	2
Communication standards	IEEE 802.3 10BASE-T IEEE 802.3u 100BASE-TX/FX IEEE 802.3ab 1000BASE-T IEEE 802.3x Flow Control IEEE 802.1d Spanning Tree Protocol (STP) IEEE 802.1w Rapid Spanning Tree Protocol (RSTP) IEEE 802.1Q VLAN Tagging IEEE 802.1p Prioritization IEEE 802.1x Port Authentication IEEE 802.1ab Link Layer Discovery Protocol (LLDP) IEEE 802.3af Power over Ethernet (PoE) IEEE 802.3at High Power over Ethernet (PoE+) IEEE 802.3az Energy Efficient Ethernet ITU-T G8032v1/v2 Ethernet Ring Protection Switching (ERPS)
Redundancy function	Redundant DC power supply; STP; RSTP; ERPSv1/v2 (max. 2 rings per switch, max. 16 switches per ring, switching time < 800 ms)
Configuration options	DIP switch for signal contact Web-Based Management Command Line Interface SNMPv1/v2c/v3
Diagnostics	Signal contact; Modbus TCP; port status; port statistics; port load; traffic monitor; syslog; SNMP traps; loop detection; diagnostics dashboard; topology map
MAC table (size)	8000 addresses
Jumbo frame size	10000. Byte
Supply voltage	DC 24 57 V
Power consumption (max.)	253 W
ESD (contact/air discharge)	8 KV / 15 KV
Baud rate	Copper cable: 10/1000 Mbit/s; Fiber optic:1000 Mbit/s

Subject to changes. Please also observe the further product documentation!



Transmission medium (communication/fieldbus)	Fiber optic: SX Multi-Mode, LX Single-Mode
Optical fiber type	Single-mode and multi-mode
VLAN	Port-based and tag-based (max. 5 VLANs)

Connection data

Connection technology: communication/fieldbus	Copper cable: 8 x RJ-45; Fiber optic: 2 x SFP; LC fiber-optic connector
---	---

Physical data

Width	50 mm / 1.969 inch
Height	160 mm / 6.299 inch
Depth from upper edge of DIN-rail	120 mm / 4.724 inch

Mechanical data

Weight	560 g
Color	light gray
Conformity marking	CE

Environmental Requirements

Surrounding air temperature (operation)	-40 60 °C
Surrounding air temperature (storage)	-40 85 °C
Protection type	IP30
Relative humidity (without condensation)	95 %
Mounting type	DIN-35 rail
Vibration resistance	per IEC 60068-2-6
Shock resistance	per IEC 60068-2-27
EMC immunity to interference	per EN 61000-6-2
EMC emission of interference	per EN 61000-6-4

Commercial data


Packaging type	BOX
Country of origin	TW
GTIN	4055144019520
Customs tariff number	85176200000

Subject to changes. Please also observe the further product documentation!



Approvals / Certificates

UL-Approvals

Logo	Approval	Additional Approval Text	Certificate name
	UL Underwriters Laboratories Inc. (ORDINARY LOCATIONS)	UL 61010-2-201	E175199

Downloads

Documentation

Manual

Lean Managed Switch 8 Ports 1000BASE-T; 2 Slots BASE-FX/TX; 8xPoE	V 1.0.0 Sep 28, 2020	pdf 9.1 MB	Download
--	-------------------------	---------------	----------

Installation Notes

Subject to changes. Please also observe the further product documentation!